

Ceramic LED Specification

Drawn by	Checked by	Approved by

Rev. 0.0

U-JINLED
Lighting Your Imagination

Head Office : 48-40, Gamnae-gil, Ilsandong-gu, Goyang-si,
Gyeonggi-do, Korea.

TEL : 031-932-8351~3. FAX : 031-932-8355

E-mail : info@ujin-led.co.kr

Overseas Factory: Plot#61, Sector#7 Export Processing Zone,
Chittagong, Bangladesh.

TEL : (880)31-74-0050 FAX : (880)31-74-0038

U-JINLED

Lighting Your Imagination

Head Office : 48-40, Gamnae-gil, Ilsandong-gu, Goyang-si, Gyeonggi-do, Korea
TEL : 031-932-8351~3 FAX : 031-932-8355 E-mail : info@ujin-led.co.kr
Overseas Factory : Plot#61, Sector#7 Export Processing Zone, Chittagong, Bangladesh
TEL : (880)31-74-0050 FAX : (880)31-74-0038

ULP-UYL02C

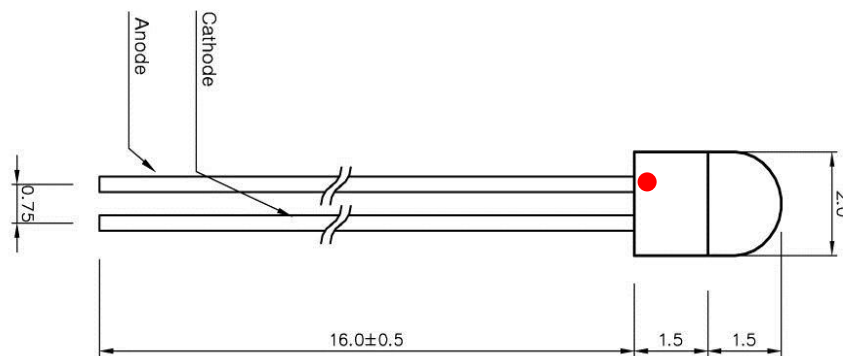
1. Features

- GaAsInP/GaAs Ultra bright yellow LED.
- Ceramic stem type LED lamp.
- 2mm Round color clear epoxy molding type.
- High luminous intensity.
- Fast Response time.

2. Applications

- Analytical Instruments.
- Medical Instrument.
- Toy Instrument.
- Panel Indications.
- Color printers & Scanners

3. Outline Dimension (Red mark : Anode)



4. Absolute maximum ratings (Ta=25°C)

Parameter	Sym	Rating	Unit
Max Forward Current	IF	30	mA
Reverse Voltage	VR	5	V
Power Dissipation	PD	70	mW
Operation Temp	Topr	-30 ~ + 100	°C
Storage Temp	Tstg	-35 ~ + 100	°C

5. Optoelectronic characteristics (Ta=25°C)

Parameter	Sym	Condition	Min	Typ	Max	Unit
Forward Voltage	VF	IF = 20mA	1.90		2.30	V
Reverse Current	IR	VR = 3V			10	μA
Luminous Intensity	Iv	IF = 20mA	190	293		mcd
Wave length	λd	"	589		595	nm
Line half width	Δλ	"		100		nm
Viewing angle		"		150		°

5. SOLDERING CONDITIONS

- Soldering Temp ≤ 260 °C
- Soldering Time ≥ 5 sec (at 2mm distance from lead entry)

U-JINLED

Lighting Your Imagination

Head Office : 48-40, Gamnae-gil, Ilsandong-gu, Goyang-si, Gyeonggi-do, Korea
 TEL : 031-932-8351~3 FAX : 031-932-8355 E-mail : info@ujin-led.co.kr
 Overseas Factory : Plot#61, Sector#7 Export Processing Zone, Chittagong, Bangladesh
 TEL : (880)31-74-0050 FAX : (880)31-74-0038

ULP- UYL02C

■ Typical Electro-Optical Characteristics Curve:

Fig 1. Forward Current vs. Forward Voltage

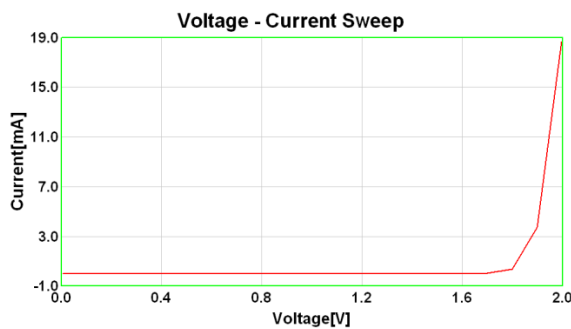


Fig 2. Relative Intensity vs. Forward Current

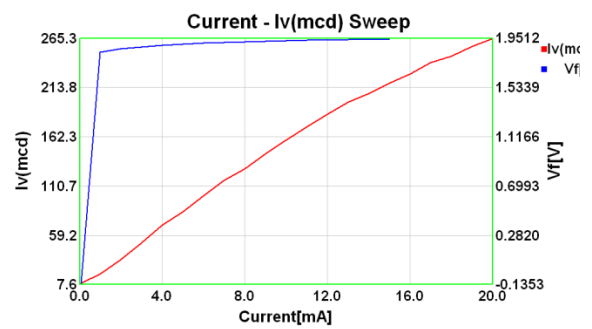


Fig 3. Relative Intensity vs. Wavelength

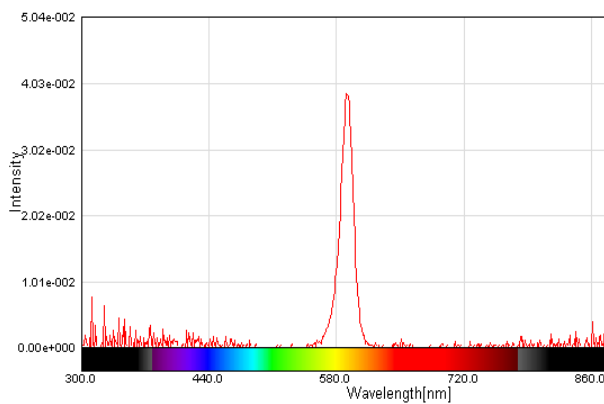


Fig4. Relative Intensity vs. Color coordinate

